

bsm-61557R**[Primary Antibody]****BioSS**
ANTIBODIES

www.bioss.com.cn

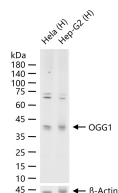
sales@bioss.com.cn

techsupport@bioss.com.cn

400-901-9800

OGG1 Recombinant Rabbit mAb**— DATASHEET —**

Host: Rabbit	Isotype: IgG	Applications: WB (1:500-2000) Reactivity: Human Predicted MW.: 39 Subcellular Location: Cytoplasm ,Nucleus
Clonality: Recombinant	CloneNo.: 7G7	
GeneID: 4968	SWISS: Q15527	
Target: OGG1		
Immunogen: A synthesized peptide derived from human OGG1: 300-345/345.		
Purification: affinity purified by Protein A		
Storage: 10mM phosphate buffered saline(pH 7.4) with 150mM sodium chloride, 0.05% BSA, 0.02% Proclin300 and 50% glycerol. Store at 4°C for short term. Store at -20°C for long term. Avoid repeated freeze/thaw cycles.		
Background: DNA repair enzyme that incises DNA at 8-oxoG residues. Excises 7,8-dihydro-8-oxoguanine and 2,6-diamino-4-hydroxy-5-N-methylformamidopyrimidine (FAPY) from damaged DNA. Has a beta-lyase activity that nicks DNA 3' to the lesion.		

— VALIDATION IMAGES —

25 ug total protein per lane of various lysates (see on figure) probed with OGG1 monoclonal antibody, unconjugated (bsm-61557R) at 1:2000 dilution and 4°C overnight incubation. Followed by conjugated secondary antibody incubation at r.t. for 60 min.