

**bsm-61556R****[ Primary Antibody ]****BioSS**  
ANTIBODIES

www.bioss.com.cn

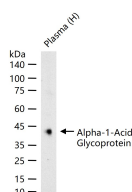
sales@bioss.com.cn

techsupport@bioss.com.cn

400-901-9800

**Alpha-1-Acid Glycoprotein Recombinant Rabbit mAb****— DATASHEET —**

<b>Host:</b> Rabbit	<b>Isotype:</b> IgG	<b>Applications:</b> <b>WB</b> (1:500-2000) <b>IHC-P</b> (1:100-200) <b>IHC-F</b> (1:100-200) <b>IF</b> (1:100-200)
<b>Clonality:</b> Recombinant		
<b>GeneID:</b> 5004	<b>SWISS:</b> P02763	
<b>Target:</b> Alpha-1-Acid Glycoprotein		<b>Reactivity:</b> Human
<b>Immunogen:</b> A synthesized peptide derived from human AGP 1: 50-100/201.		
<b>Purification:</b> affinity purified by Protein A		
<b>Storage:</b> 10mM phosphate buffered saline(pH 7.4) with 150mM sodium chloride, 0.05% BSA, 0.02% Proclin300 and 50% glycerol. Store at 4°C for short term. Store at -20°C for long term. Avoid repeated freeze/thaw cycles.		<b>Predicted MW.:</b> 24
<b>Background:</b> Functions as a transport protein in the blood stream. Binds various ligands in the interior of its beta-barrel domain. Also binds synthetic drugs and influences their distribution and availability in the body. Appears to function in modulating the activity of the immune system during the acute-phase reaction.		<b>Subcellular Location:</b> Secreted

**— VALIDATION IMAGES —**

25 ug total protein per lane of various lysates (see on figure) probed with Alpha-1-Acid Glycoprotein monoclonal antibody, unconjugated (bsm-61556R) at 1:1000 dilution and 4°C overnight incubation. Followed by conjugated secondary antibody incubation at r.t. for 60 min.