

bsm-61553R**[Primary Antibody]****SERPINC1 Recombinant Rabbit mAb****BioSS**
ANTIBODIES

www.bioss.com.cn

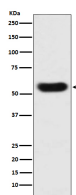
sales@bioss.com.cn

techsupport@bioss.com.cn

400-901-9800

— DATASHEET —

Host: Rabbit	Isotype: IgG	Applications: WB (1:1000-2000) ICC/IF (1:50-200)
Clonality: Recombinant		
GeneID: 462	SWISS: P01008	Reactivity: Human
Target: SERPINC1		
Immunogen: A synthesized peptide derived from human Antithrombin 3: 1-64/464.		Predicted MW.: 53
Purification: affinity purified by Protein A		Subcellular Location: Secreted
Storage: 10mM phosphate buffered saline(pH 7.4) with 150mM sodium chloride, 0.05% BSA, 0.02% Proclin300 and 50% glycerol. Store at 4°C for short term. Store at -20°C for long term. Avoid repeated freeze/thaw cycles.		
Background: Most important serine protease inhibitor in plasma that regulates the blood coagulation cascade. AT-III inhibits thrombin, matriptase-3/TMPRSS7, as well as factors IXa, Xa and Xia. Its inhibitory activity is greatly enhanced in the presence of heparin.		

— VALIDATION IMAGES —

Western blot analysis of human plasma lysate.
Using SERPINC1 (bsm-61553R) monoclonal antibody at 1:1000 dilution and 4°C overnight incubation. Followed by conjugated secondary antibody incubation at r.t. for 60 min.