

**bsm-61546R****[ Primary Antibody ]**

www.bioss.com.cn

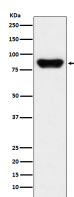
sales@bioss.com.cn

techsupport@bioss.com.cn

400-901-9800

**Prothrombin Recombinant Rabbit mAb****— DATASHEET —**

<b>Host:</b> Rabbit	<b>Isotype:</b> IgG	<b>Applications:</b> <b>WB</b> (1:1000-2000) <b>IP</b> (1:20-50)
<b>Clonality:</b> Recombinant		<b>Reactivity:</b> Human
<b>GeneID:</b> 2147	<b>SWISS:</b> P00734	
<b>Target:</b> F2		
<b>Immunogen:</b> A synthesized peptide derived from human Prothrombin: 400-462/622.		<b>Predicted MW.:</b> 70
<b>Purification:</b> affinity purified by Protein A		<b>Subcellular Location:</b> Cytoplasm
<b>Storage:</b> 10mM phosphate buffered saline(pH 7.4) with 150mM sodium chloride, 0.05% BSA, 0.02% Proclin300 and 50% glycerol. Store at 4°C for short term. Store at -20°C for long term. Avoid repeated freeze/thaw cycles.		
<b>Background:</b> Thrombin, which cleaves bonds after Arg and Lys, converts fibrinogen to fibrin and activates factors V, VII, VIII, XIII, and, in complex with thrombomodulin, protein C. Functions in blood homeostasis, inflammation and wound healing.		

**— VALIDATION IMAGES —**

Western blot analysis of human serum lysate.  
Using F2 (bsm-61546R) monoclonal antibody at 1:1000 dilution and 4°C overnight incubation.  
Followed by conjugated secondary antibody incubation at r.t. for 60 min.