

**bsm-61542R****[ Primary Antibody ]****BioSS**  
**ANTIBODIES**

www.bioss.com.cn

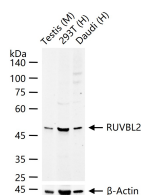
sales@bioss.com.cn

techsupport@bioss.com.cn

400-901-9800

**RUVBL2 Recombinant Rabbit mAb****— DATASHEET —**

<b>Host:</b> Rabbit	<b>Isotype:</b> IgG	<b>Applications:</b> WB (1:500-2000)
<b>Clonality:</b> Recombinant		<b>Reactivity:</b> Human, Mouse
<b>GeneID:</b> 10856	<b>SWISS:</b> Q9Y230	
<b>Target:</b> RUVBL2		
<b>Immunogen:</b> A synthesized peptide derived from human RUVBL2: 400-463/463.		<b>Predicted MW.:</b> 51
<b>Purification:</b> affinity purified by Protein A		<b>Subcellular Location:</b> Nucleus
<b>Storage:</b> 10mM phosphate buffered saline(pH 7.4) with 150mM sodium chloride, 0.05% BSA, 0.02% Proclin300 and 50% glycerol. Store at 4°C for short term. Store at -20°C for long term. Avoid repeated freeze/thaw cycles.		
<b>Background:</b> Possesses single-stranded DNA-stimulated ATPase and ATP-dependent DNA helicase (5' to 3') activity; hexamerization is thought to be critical for ATP hydrolysis and adjacent subunits in the ring-like structure contribute to the ATPase activity. Component of the NuA4 histone acetyltransferase complex which is involved in transcriptional activation of select genes principally by acetylation of nucleosomal histones H4 and H2A.		

**— VALIDATION IMAGES —**

25 ug total protein per lane of various lysates (see on figure) probed with RUVBL2 monoclonal antibody, unconjugated (bsm-61542R) at 1:1000 dilution and 4°C overnight incubation. Followed by conjugated secondary antibody incubation at r.t. for 60 min.