

bsm-61533R**[Primary Antibody]****Bioss**
ANTIBODIES

www.bioss.com.cn

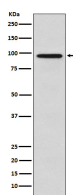
sales@bioss.com.cn

techsupport@bioss.com.cn

400-901-9800

GOLGA1 Recombinant Rabbit mAb**— DATASHEET —**

Host: Rabbit	Isotype: IgG	Applications: WB (1:1000-2000) IP (1:20-50)
Clonality: Recombinant		Reactivity: Human
GeneID: 2800	SWISS: Q92805	
Target: GOLGA1		
Immunogen: A synthesized peptide derived from human Golgin subfamily A member 1: 1-57/767.		Predicted MW.: 88
Purification: affinity purified by Protein A		Subcellular Location: Cell membrane ,Cytoplasm
Storage: 10mM phosphate buffered saline(pH 7.4) with 150mM sodium chloride, 0.05% BSA, 0.02% Proclin300 and 50% glycerol. Store at 4°C for short term. Store at -20°C for long term. Avoid repeated freeze/thaw cycles.		
Background: Involved in vesicular trafficking at the Golgi apparatus level. Involved in endosome-to-Golgi trafficking.		

— VALIDATION IMAGES —

Western blot analysis of HeLa cell lysate. Using GOLGA1 (bsm-61533R) monoclonal antibody at 1:1000 dilution and 4°C overnight incubation. Followed by conjugated secondary antibody incubation at r.t. for 60 min.