

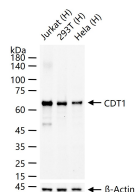
bsm-61529R**[Primary Antibody]****BioSS**
ANTIBODIES

www.bioss.com.cn

sales@bioss.com.cn

techsupport@bioss.com.cn

400-901-9800

CDT1 Recombinant Rabbit mAb**— DATASHEET —****Host:** Rabbit**Isotype:** IgG**Clonality:** Recombinant**GeneID:** 81620**SWISS:** Q9H211**Target:** CDT1**Immunogen:** A synthesized peptide derived from human CDT1: 230-546/546.**Purification:** affinity purified by Protein A**Storage:** 10mM phosphate buffered saline(pH 7.4) with 150mM sodium chloride, 0.05% BSA, 0.02% Proclin300 and 50% glycerol. Store at 4°C for short term. Store at -20°C for long term. Avoid repeated freeze/thaw cycles.**Background:** Required for both DNA replication and mitosis. DNA replication licensing factor, required for pre-replication complex assembly. Cooperates with CDC6 and the origin recognition complex (ORC) during G1 phase of the cell cycle to promote the loading of the mini-chromosome maintenance (MCM) complex onto DNA to generate pre-replication complexes (pre-RC).**Applications:** **WB** (1:500-2000)**IHC-P** (1:100-200)**IHC-F** (1:100-200)**IF** (1:50-200)**ICC/IF** (1:50-200)**IP** (1:20-50)**Reactivity:** Human**Predicted MW.:** 60**— VALIDATION IMAGES —**

25 ug total protein per lane of various lysates (see on figure) probed with CDT1 monoclonal antibody, unconjugated (bsm-61529R) at 1:1000 dilution and 4°C overnight incubation. Followed by conjugated secondary antibody incubation at r.t. for 60 min.