

bsm-61528R**[Primary Antibody]**

www.bioss.com.cn

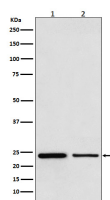
sales@bioss.com.cn

techsupport@bioss.com.cn

400-901-9800

TBPL1 Recombinant Rabbit mAb**— DATASHEET —**

Host: Rabbit	Isotype: IgG	Applications: WB (1:1000-2000) IHC-P (1:100-200) IHC-F (1:100-200) IF (1:50-200) Flow-Cyt (1:50-100) ICC/IF (1:50-200) IP (1:20-50) Reactivity: Human, Mouse, Rat Predicted MW.: ²¹ Subcellular Location: Cytoplasm ,Nucleus
Clonality: Recombinant		
GeneID: 9519	SWISS: P62380	
Target: TBPL1		
Immunogen: A synthesized peptide derived from human TBPL1: 100-150/186.		
Purification: affinity purified by Protein A		
Storage: 10mM phosphate buffered saline(pH 7.4) with 150mM sodium chloride, 0.05% BSA, 0.02% Proclin300 and 50% glycerol. Store at 4°C for short term. Store at -20°C for long term. Avoid repeated freeze/thaw cycles.		
Background: Part of a specialized transcription system that mediates the transcription of most ribosomal proteins through the 5'-TCT-3' motif which is a core promoter element at these genes. Seems to also mediate the transcription of NF1. Does not bind the TATA box.		

— VALIDATION IMAGES —

Western blot analysis of (1) HeLa cell lysate; (1) Mouse testis lysate. Using TBPL1 (bsm-61528R) monoclonal antibody at 1:1000 dilution and 4°C overnight incubation. Followed by conjugated secondary antibody incubation at r.t. for 60 min.