

bsm-61525R**[Primary Antibody]****Bioss**
ANTIBODIES

www.bioss.com.cn

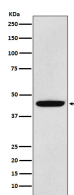
sales@bioss.com.cn

techsupport@bioss.com.cn

400-901-9800

PDK1 Recombinant Rabbit mAb**— DATASHEET —**

Host: Rabbit	Isotype: IgG	Applications: WB (1:1000-2000) IP (1:20-50)
Clonality: Recombinant		Reactivity: Human, Mouse, Rat
GeneID: 5163	SWISS: Q15118	
Target: PDK1		
Immunogen: A synthesized peptide derived from human PDK1: 15-64.		
Purification: affinity purified by Protein A		
Storage: 10mM phosphate buffered saline(pH 7.4) with 150mM sodium chloride, 0.05% BSA, 0.02% Proclin300 and 50% glycerol. Store at 4°C for short term. Store at -20°C for long term. Avoid repeated freeze/thaw cycles.		
Background: Kinase that plays a key role in regulation of glucose and fatty acid metabolism and homeostasis via phosphorylation of the pyruvate dehydrogenase subunits PDHA1 and PDHA2. This inhibits pyruvate dehydrogenase activity, and thereby regulates metabolite flux through the tricarboxylic acid cycle, down-regulates aerobic respiration and inhibits the formation of acetyl-coenzyme A from pyruvate.		
		Predicted MW.: 49
		Subcellular Location: Cytoplasm

— VALIDATION IMAGES —

Western blot analysis of LNCaP cell lysate. Using PDK1 (bsm-61525R) monoclonal antibody at 1:1000 dilution and 4°C overnight incubation. Followed by conjugated secondary antibody incubation at r.t. for 60 min.