

bsm-61521R**[Primary Antibody]****BioSS**
ANTIBODIES

www.bioss.com.cn

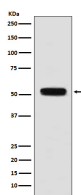
sales@bioss.com.cn

techsupport@bioss.com.cn

400-901-9800

Fibulin 5 Recombinant Rabbit mAb**— DATASHEET —**

Host: Rabbit	Isotype: IgG	Applications: WB (1:1000-2000)
Clonality: Recombinant		Reactivity: Human, Mouse
GeneID: 10516	SWISS: Q9UBX5	
Target: Fibulin 5		
Immunogen: A synthesized peptide derived from human Fibulin 5: 250-448/448.		Predicted MW.: 50
Purification: affinity purified by Protein A		Subcellular Location: Secreted
Storage: 10mM phosphate buffered saline(pH 7.4) with 150mM sodium chloride, 0.05% BSA, 0.02% Proclin300 and 50% glycerol. Store at 4°C for short term. Store at -20°C for long term. Avoid repeated freeze/thaw cycles.		
Background: Essential for elastic fiber formation, is involved in the assembly of continuous elastin (ELN) polymer and promotes the interaction of microfibrils and ELN. Stabilizes and organizes elastic fibers in the skin, lung and vasculature. Promotes adhesion of endothelial cells through interaction of integrins and the RGD motif. Vascular ligand for integrin receptors which may play a role in vascular development and remodeling.		

— VALIDATION IMAGES —

Western blot analysis of mouse heart lysate.
Using Fibulin 5 (bsm-61521R) monoclonal antibody at 1:1000 dilution and 4°C overnight incubation. Followed by conjugated secondary antibody incubation at r.t. for 60 min.