

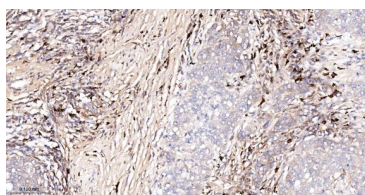
bsm-61515R**[Primary Antibody]****Bioss**
ANTIBODIES

www.bioss.com.cn

sales@bioss.com.cn

techsupport@bioss.com.cn

400-901-9800

BNIP3L Recombinant Rabbit mAb**— DATASHEET —****Host:** Rabbit**Isotype:** IgG**Clonality:** Recombinant**CloneNo.:** 19B20**GeneID:** 665**SWISS:** O60238**Target:** BNIP3L**Immunogen:** A synthesized peptide derived from human BNIP3L: 150-219.**Purification:** affinity purified by Protein A**Storage:** 10mM phosphate buffered saline(pH 7.4) with 150mM sodium chloride, 0.05% BSA, 0.02% Proclin300 and 50% glycerol. Store at 4°C for short term. Store at -20°C for long term. Avoid repeated freeze/thaw cycles.**Background:** Induces apoptosis. Interacts with viral and cellular anti-apoptosis proteins. Can overcome the suppressors BCL-2 and BCL-XL, although high levels of BCL-XL expression will inhibit apoptosis. Inhibits apoptosis induced by BNIP3.**Applications:** **IHC-P** (1:50-200)**IHC-F** (1:50-200)**IF** (1:50-200)**Reactivity:** Human**Predicted**
MW.: 24**Subcellular** Cell membrane ,Cytoplasm
Location: ,Nucleus**— VALIDATION IMAGES —**

Paraformaldehyde-fixed, paraffin embedded
Human Breast Cancer; Antigen retrieval by
boiling in sodium citrate buffer (pH6.0) for 15
min; Antibody incubation BNIP3L Monoclonal
Antibody, Unconjugated(bsm-61515R) at 1:200
overnight at 4°C, followed by conjugation to the
bs-0295G-HRP and DAB (C-0010) staining.