

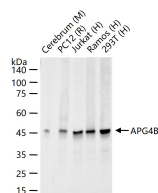
bsm-61514R**[Primary Antibody]****APG4B Recombinant Rabbit mAb****Bioss**
ANTIBODIES

www.bioss.com.cn

sales@bioss.com.cn

techsupport@bioss.com.cn

400-901-9800

— DATASHEET —**Host:** Rabbit**Isotype:** IgG**Clonality:** Recombinant**CloneNo.:** 3A5**GeneID:** 23192**SWISS:** Q9Y4P1**Target:** APG4B**Immunogen:** A synthesized peptide derived from human ATG4B: 250-300.**Purification:** affinity purified by Protein A**Storage:** 10mM phosphate buffered saline(pH 7.4) with 150mM sodium chloride, 0.05% BSA, 0.02% Proclin300 and 50% glycerol. Store at 4°C for short term. Store at -20°C for long term. Avoid repeated freeze/thaw cycles.**Background:** Cysteine protease that plays a key role in autophagy by mediating both proteolytic activation and delipidation of ATG8 family proteins. Required for canonical autophagy (macroautophagy), non-canonical autophagy as well as for mitophagy.**Applications:** WB (1:500-2000)**Reactivity:** Human, Mouse, Rat**Predicted
MW.:** 44**Subcellular
Location:** Cytoplasm**— VALIDATION IMAGES —**

25 ug total protein per lane of various lysates (see on figure) probed with APG4B monoclonal antibody, unconjugated (bsm-61514R) at 1:1000 dilution and 4°C overnight incubation. Followed by conjugated secondary antibody incubation at r.t. for 60 min.