

bsm-61513R**[Primary Antibody]****BNIP1 Recombinant Rabbit mAb****Bioss**
ANTIBODIES

www.bioss.com.cn

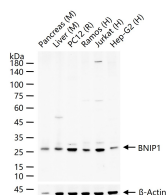
sales@bioss.com.cn

techsupport@bioss.com.cn

400-901-9800

— DATASHEET —

| | | |
|--|----------------------|--|
| Host: Rabbit | Isotype: IgG | Applications: WB (1:500-2000) IHC-P (1:100-200) IHC-F (1:100-200) IF (1:100-200) |
| Clonality: Recombinant | | Reactivity: Human, Mouse, Rat |
| GeneID: 662 | SWISS: Q12981 | |
| Target: BNIP1 | | |
| Immunogen: A synthesized peptide derived from human BNIP1: 100-150/228. | | |
| Purification: affinity purified by Protein A | | |
| Storage: 10mM phosphate buffered saline(pH 7.4) with 150mM sodium chloride, 0.05% BSA, 0.02% Proclin300 and 50% glycerol. Store at 4°C for short term. Store at -20°C for long term. Avoid repeated freeze/thaw cycles. | | Predicted MW.: 26 |
| Background: SNARE that may be involved in targeting and fusion of Golgi-derived retrograde transport vesicles with the ER. Required for maintenance of ER network. Implicated in the suppression of cell death. | | Subcellular Location: Cytoplasm |

— VALIDATION IMAGES —

25 ug total protein per lane of various lysates (see on figure) probed with BNIP1 monoclonal antibody, unconjugated (bsm-61513R) at 1:1000 dilution and 4°C overnight incubation. Followed by conjugated secondary antibody incubation at r.t. for 60 min.