

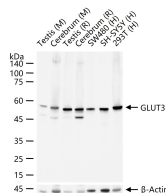
**bsm-61510R****[ Primary Antibody ]****GLUT3 Recombinant Rabbit mAb****Bioss**  
ANTIBODIES

www.bioss.com.cn

sales@bioss.com.cn

techsupport@bioss.com.cn

400-901-9800

**— DATASHEET —****Host:** Rabbit**Isotype:** IgG**Clonality:** Recombinant**CloneNo.:** 9A18**GeneID:** 6515**SWISS:** P11169**Target:** GLUT3**Immunogen:** A synthesized peptide derived from human GLUT3: 10-52.**Purification:** affinity purified by Protein A**Storage:** 10mM phosphate buffered saline(pH 7.4) with 150mM sodium chloride, 0.05% BSA, 0.02% Proclin300 and 50% glycerol. Store at 4°C for short term. Store at -20°C for long term. Avoid repeated freeze/thaw cycles.**Background:** Facilitative glucose transporter. Can also mediate the uptake of various other monosaccharides across the cell membrane. Mediates the uptake of glucose, 2-deoxyglucose, galactose, mannose, xylose and fucose, and probably also dehydroascorbate.**Applications:** WB (1:1000-5000)**Reactivity:** Human, Mouse, Rat**Predicted  
MW.:** 54**Subcellular  
Location:** Cell membrane**— VALIDATION IMAGES —**

25 ug total protein per lane of various lysates (see on figure) probed with GLUT3 monoclonal antibody, unconjugated (bsm-61510R) at 1:2000 dilution and 4°C overnight incubation. Followed by conjugated secondary antibody incubation at r.t. for 60 min.