

**bsm-61506R****[ Primary Antibody ]****delta Sarcoglycan Recombinant Rabbit mAb****Bioss**  
**ANTIBODIES**

www.bioss.com.cn

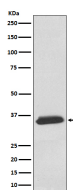
sales@bioss.com.cn

techsupport@bioss.com.cn

400-901-9800

**— DATASHEET —**

<b>Host:</b> Rabbit	<b>Isotype:</b> IgG	<b>Applications:</b> WB (1:1000-2000) IHC-P (1:100-200) IHC-F (1:100-200) IF (1:100-200) IP (1:20-50)  <b>Reactivity:</b> Human   <b>Predicted MW.:</b> 32  <b>Subcellular Location:</b> Cell membrane
<b>Clonality:</b> Recombinant		
<b>GeneID:</b> 6444	<b>SWISS:</b> Q92629	
<b>Target:</b> delta Sarcoglycan		
<b>Immunogen:</b> A synthesized peptide derived from human delta Sarcoglycan: 240-270/289.		
<b>Purification:</b> affinity purified by Protein A		
<b>Storage:</b> 10mM phosphate buffered saline(pH 7.4) with 150mM sodium chloride, 0.05% BSA, 0.02% Proclin300 and 50% glycerol. Store at 4°C for short term. Store at -20°C for long term. Avoid repeated freeze/thaw cycles.		
<b>Background:</b> Component of the sarcoglycan complex, a subcomplex of the dystrophin-glycoprotein complex which forms a link between the F-actin cytoskeleton and the extracellular matrix.		

**— VALIDATION IMAGES —**

Western blot analysis of Human fetal heart lysate. Using delta Sarcoglycan (bsm-61506R) monoclonal antibody at 1:1000 dilution and 4°C overnight incubation. Followed by conjugated secondary antibody incubation at r.t. for 60 min.