

bsm-61505R**[Primary Antibody]****alpha Sarcoglycan Recombinant Rabbit mAb****Bioss**
ANTIBODIES

www.bioss.com.cn

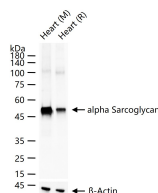
sales@bioss.com.cn

techsupport@bioss.com.cn

400-901-9800

— DATASHEET —

Host: Rabbit	Isotype: IgG	Applications: WB (1:500-2000) IHC-P (1:100-200) IHC-F (1:100-200) IF (1:100-200) IP (1:20-50) Reactivity: Mouse, Rat (predicted: Human) Predicted MW.: 43 Subcellular Location: Cell membrane ,Cytoplasm
Clonality: Recombinant	CloneNo.: 4A2	
GeneID: 6442	SWISS: Q16586	
Target: alpha Sarcoglycan		
Immunogen: A synthesized peptide derived from human alpha Sarcoglycan: 320-387.		
Purification: affinity purified by Protein A		
Storage: 10mM phosphate buffered saline(pH 7.4) with 150mM sodium chloride, 0.05% BSA, 0.02% Proclin300 and 50% glycerol. Store at 4°C for short term. Store at -20°C for long term. Avoid repeated freeze/thaw cycles.		
Background: Component of the sarcoglycan complex, a subcomplex of the dystrophin-glycoprotein complex which forms a link between the F-actin cytoskeleton and the extracellular matrix.		

— VALIDATION IMAGES —

25 ug total protein per lane of various lysates (see on figure) probed with alpha Sarcoglycan monoclonal antibody, unconjugated (bsm-61505R) at 1:1000 dilution and 4°C overnight incubation. Followed by conjugated secondary antibody incubation at r.t. for 60 min.