

bsm-61504R**[Primary Antibody]****gamma Sarcoglycan Recombinant Rabbit mAb****Bioss**
ANTIBODIES

www.bioss.com.cn

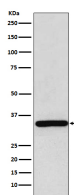
sales@bioss.com.cn

techsupport@bioss.com.cn

400-901-9800

— DATASHEET —

Host: Rabbit	Isotype: IgG	Applications: WB (1:1000-2000) IHC-P (1:100-200) IHC-F (1:100-200) IF (1:100-200) IP (1:20-50) Reactivity: Human Predicted MW.: 32 Subcellular Location: Cell membrane
Clonality: Recombinant		
GeneID: 6445	SWISS: Q13326	
Target: gamma Sarcoglycan		
Immunogen: A synthesized peptide derived from human gamma Sarcoglycan: 80-291.		
Purification: affinity purified by Protein A		
Storage: 10mM phosphate buffered saline(pH 7.4) with 150mM sodium chloride, 0.05% BSA, 0.02% Proclin300 and 50% glycerol. Store at 4°C for short term. Store at -20°C for long term. Avoid repeated freeze/thaw cycles.		
Background: Component of the sarcoglycan complex, a subcomplex of the dystrophin-glycoprotein complex which forms a link between the F-actin cytoskeleton and the extracellular matrix.		

— VALIDATION IMAGES —

Western blot analysis of Human skeletal muscle lysate. Using gamma Sarcoglycan (bsm-61504R) monoclonal antibody at 1:1000 dilution and 4°C overnight incubation. Followed by conjugated secondary antibody incubation at r.t. for 60 min.