

bsm-61500R**[Primary Antibody]****BioSS**
ANTIBODIES

www.bioss.com.cn

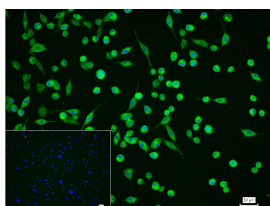
sales@bioss.com.cn

techsupport@bioss.com.cn

400-901-9800

CAPN1 Recombinant Rabbit mAb**— DATASHEET —**

Host: Rabbit	Isotype: IgG	Applications: ICC/IF (1:50-200) Reactivity: Human (predicted: Mouse, Rat) Predicted MW.: 82 Subcellular Location: Cell membrane ,Cytoplasm
Clonality: Recombinant	CloneNo.: 8G1	
GeneID: 823	SWISS: P07384	
Target: CAPN1		
Immunogen: A synthesized peptide derived from human Calpain 1 catalytic subunit: 154-200.		
Purification: affinity purified by Protein A		
Storage: 10mM phosphate buffered saline(pH 7.4) with 150mM sodium chloride, 0.05% BSA, 0.02% Proclin300 and 50% glycerol. Store at 4°C for short term. Store at -20°C for long term. Avoid repeated freeze/thaw cycles.		
Background: Calcium-regulated non-lysosomal thiol-protease which catalyzes limited proteolysis of substrates involved in cytoskeletal remodeling and signal transduction. Proteolytically cleaves CTBP1 at 'Asn-375', 'Gly-387' and 'His-409'. Cleaves and activates caspase-7 (CASP7).		

— VALIDATION IMAGES —

4% Paraformaldehyde-fixed A431 (H) cell; Triton X-100 at r.t. for 20 min; Antibody incubation with (CAPN1) monoclonal Antibody, unconjugated (bsm-61500R) 1:100, 90 min at 37°C; followed by conjugated Goat Anti-Rabbit IgG antibody (green, bs-40295G-FITC) at 37°C for 90 min, DAPI (blue, C02-04002) was used to stain the cell nuclei. PBS instead of the primary antibody was used as the blank control.