

bsm-61498R**[Primary Antibody]****Bioss**
ANTIBODIES

www.bioss.com.cn

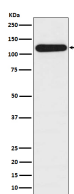
sales@bioss.com.cn

techsupport@bioss.com.cn

400-901-9800

BubR1 Recombinant Rabbit mAb**— DATASHEET —**

Host: Rabbit	Isotype: IgG	Applications: WB (1:500-2000) IHC-P (1:50-200) IHC-F (1:50-200) IF (1:50-200) Flow-Cyt (1:50-100) IP (1:20-50) Reactivity: Human, Mouse, Rat Predicted MW.: 120 Subcellular Location: Cytoplasm ,Nucleus
Clonality: Recombinant		
GeneID: 701	SWISS: O60566	
Target: BubR1		
Immunogen: A synthesized peptide derived from human BUB1B: 600-650/1050.		
Purification: affinity purified by Protein A		
Storage: 10mM phosphate buffered saline(pH 7.4) with 150mM sodium chloride, 0.05% BSA, 0.02% Proclin300 and 50% glycerol. Store at 4°C for short term. Store at -20°C for long term. Avoid repeated freeze/thaw cycles.		
Background: Essential component of the mitotic checkpoint. Required for normal mitosis progression. The mitotic checkpoint delays anaphase until all chromosomes are properly attached to the mitotic spindle.		

— VALIDATION IMAGES —

Western blot analysis of HepG2 cell lysate. Using BubR1 (bsm-61498R) monoclonal antibody at 1:1000 dilution and 4°C overnight incubation. Followed by conjugated secondary antibody incubation at r.t. for 60 min.