

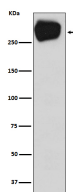
bsm-61497R**[Primary Antibody]****MRP1/ABCC1 Recombinant Rabbit mAb****BioSS**
ANTIBODIES

www.bioss.com.cn

sales@bioss.com.cn

techsupport@bioss.com.cn

400-901-9800

— DATASHEET —**Host:** Rabbit**Isotype:** IgG**Clonality:** Recombinant**CloneNo.:** 6F10**GeneID:** 4363**SWISS:** P33527**Target:** MRP1/ABCC1**Immunogen:** A synthesized peptide derived from human ABCC1: 1500-1531.**Purification:** affinity purified by Protein A**Storage:** 10mM phosphate buffered saline(pH 7.4) with 150mM sodium chloride, 0.05% BSA, 0.02% Proclin300 and 50% glycerol.
Store at 4°C for short term. Store at -20°C for long term. Avoid repeated freeze/thaw cycles.**Background:** Mediates export of organic anions and drugs from the cytoplasm. Mediates ATP-dependent transport of glutathione and glutathione conjugates, leukotriene C4, estradiol-17-beta-o-glucuronide, methotrexate, antiviral drugs and other xenobiotics. Confers resistance to anticancer drugs. Hydrolyzes ATP with low efficiency.**Applications:** WB (1:1000-2000)**Reactivity:** Human**Predicted
MW.:** 172**Subcellular
Location:** Cell membrane**— VALIDATION IMAGES —**

Western blot analysis of A431 cell lysate. Using MRP1/ABCC1 (bsm-61497R) monoclonal antibody at 1:1000 dilution and 4°C overnight incubation. Followed by conjugated secondary antibody incubation at r.t. for 60 min.