

bsm-61493R**[Primary Antibody]**

www.bioss.com.cn

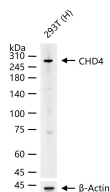
sales@bioss.com.cn

techsupport@bioss.com.cn

400-901-9800

CHD4 Recombinant Rabbit mAb**— DATASHEET —**

Host: Rabbit	Isotype: IgG	Applications: WB (1:500-2000) Flow-Cyt (1:50-100) ICC/IF (1:50-200) Reactivity: Human Predicted MW.: 218 Subcellular Location: Cytoplasm ,Nucleus
Clonality: Recombinant		
GeneID: 1108	SWISS: Q14839	
Target: CHD4		
Immunogen: A synthesized peptide derived from human CHD4: 1800-1870/1912.		
Purification: affinity purified by Protein A		
Storage: 10mM phosphate buffered saline(pH 7.4) with 150mM sodium chloride, 0.05% BSA, 0.02% Proclin300 and 50% glycerol. Store at 4°C for short term. Store at -20°C for long term. Avoid repeated freeze/thaw cycles.		
Background: ATP-dependent helicase that binds and distorts nucleosomal DNA. Acts as a component of the histone deacetylase NuRD complex which participates in the remodeling of chromatin (PubMed:16428440, PubMed:17626165, PubMed:28977666). Localizes to acetylated damaged chromatin in a ZMYND8-dependent manner, to promote transcriptional repression and double-strand break repair by homologous recombination.		

— VALIDATION IMAGES —

25 ug total protein per lane of various lysates (see on figure) probed with CHD4 monoclonal antibody, unconjugated (bsm-61493R) at 1:1000 dilution and 4°C overnight incubation. Followed by conjugated secondary antibody incubation at r.t. for 60 min.