

bsm-61489R

[Primary Antibody]

Involucrin Recombinant Rabbit mAb

Bioss
ANTIBODIES

www.bioss.com.cn

sales@bioss.com.cn

techsupport@bioss.com.cn

400-901-9800

— DATASHEET —

Host: Rabbit

Clonality: Recombinant

GeneID: 3713

Target: Involucrin

Immunogen: A synthesized peptide derived from human Involucrin: 100-200.

Purification: affinity purified by Protein A

Storage: 10mM phosphate buffered saline(pH 7.4) with 150mM sodium chloride, 0.05% BSA, 0.02% Proclin300 and 50% glycerol. Store at 4°C for short term. Store at -20°C for long term. Avoid repeated freeze/thaw cycles.

Background: Part of the insoluble cornified cell envelope (CE) of stratified squamous epithelia.

Isotype: IgG

CloneNo.: 10A18

SWISS: P07476

Applications: WB (1:500-2000)

IHC-P (1:100-500)

IHC-F (1:100-500)

IF (1:100-500)

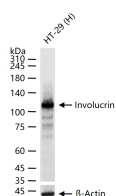
Flow-Cyt (1:50-100)

Reactivity: Human

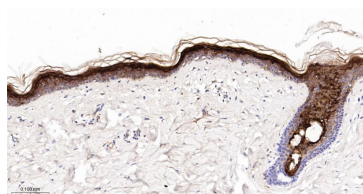
**Predicted
MW.:** 68

**Subcellular
Location:** Cytoplasm

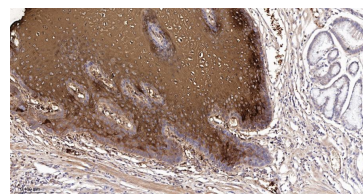
— VALIDATION IMAGES —



25 ug total protein per lane of various lysates (see on figure) probed with Involucrin monoclonal antibody, unconjugated (bsm-61489R) at 1:1000 dilution and 4°C overnight incubation. Followed by conjugated secondary antibody incubation at r.t. for 60 min.



Paraformaldehyde-fixed, paraffin embedded Human Skin; Antigen retrieval by boiling in sodium citrate buffer (pH6.0) for 15 min; The section was incubated with Involucrin Monoclonal Antibody, Unconjugated (bsm-61489R) at 1:200 overnight at 4°C, followed by conjugation to the bs-0295G-HRP and DAB (C-0010) staining.



Paraformaldehyde-fixed, paraffin embedded Human Esophageal Cancer; Antigen retrieval by boiling in sodium citrate buffer (pH6.0) for 15 min; The section was incubated with Involucrin Monoclonal Antibody, Unconjugated (bsm-61489R) at 1:200 overnight at 4°C, followed by conjugation to the bs-0295G-HRP and DAB (C-0010) staining.