

bsm-61488R**[Primary Antibody]****Bioss**
ANTIBODIES

www.bioss.com.cn

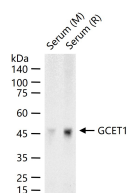
sales@bioss.com.cn

techsupport@bioss.com.cn

400-901-9800

GCET1 Recombinant Rabbit mAb**— DATASHEET —**

Host: Rabbit	Isotype: IgG	Applications: WB (1:500-2000) Reactivity: Mouse, Rat (predicted: Human) Predicted MW.: 47 Subcellular Location: Secreted ,Cytoplasm
Clonality: Recombinant	CloneNo.: 2F11	
GeneID: 327657	SWISS: Q86WD7	
Target: GCET1		
Immunogen: A synthesized peptide derived from human Serpin A9: 1-51/417.		
Purification: affinity purified by Protein A		
Storage: 10mM phosphate buffered saline(pH 7.4) with 150mM sodium chloride, 0.05% BSA, 0.02% Proclin300 and 50% glycerol. Store at 4°C for short term. Store at -20°C for long term. Avoid repeated freeze/thaw cycles.		
Background: Protease inhibitor that inhibits trypsin and trypsin-like serine proteases (in vitro). Inhibits plasmin and thrombin with lower efficiency (in vitro).		

— VALIDATION IMAGES —

25 ug total protein per lane of various lysates (see on figure) probed with GCET1 monoclonal antibody, unconjugated (bsm-61488R) at 1:1000 dilution and 4°C overnight incubation. Followed by conjugated secondary antibody incubation at r.t. for 60 min.