

bsm-61487R**[Primary Antibody]**

BioSS
ANTIBODIES

www.bioss.com.cn

sales@bioss.com.cn

techsupport@bioss.com.cn

400-901-9800

Clathrin heavy chain Recombinant Rabbit mAb

DATASHEET

Host: Rabbit**Isotype:** IgG**Clonality:** Recombinant**CloneNo.:** 19G19**GeneID:** 1213**SWISS:** Q00610**Target:** Clathrin heavy chain**Immunogen:** A synthesized peptide derived from human Clathrin heavy chain 1: 204-256.**Purification:** affinity purified by Protein A

Storage: 10mM phosphate buffered saline(pH 7.4) with 150mM sodium chloride, 0.05% BSA, 0.02% Proclin300 and 50% glycerol. Store at 4°C for short term. Store at -20°C for long term. Avoid repeated freeze/thaw cycles.

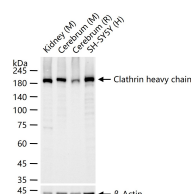
Background: Clathrin heavy chain proteins are composed of several functional domains, including a carboxy-terminal region that permits interaction with other heavy chain proteins within a triskelion, and a globular amino-terminal region that associates with other vesicle proteins. Adaptor proteins, such as AP2, epsin and EPS15, are responsible for the recruitment of vesicle proteins to sites of pit formation and the assembly of the clathrin-coated vesicle.

Applications: WB (1:500-2000)**IHC-P** (1:50-200)**IHC-F** (1:50-200)**IF** (1:50-200)**ICC/IF** (1:50-200)**Reactivity:** Human, Mouse, Rat

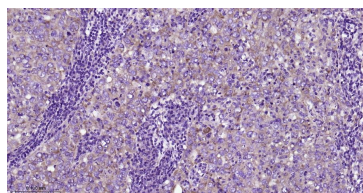
Predicted
MW.: 192187

Subcellular
Location: Cell membrane ,Cytoplasm

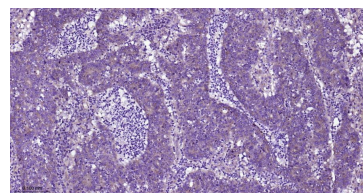
VALIDATION IMAGES



25 ug total protein per lane of various lysates (see on figure) probed with Clathrin heavy chain monoclonal antibody, unconjugated (bsm-61487R) at 1:2000 dilution and 4°C overnight incubation. Followed by conjugated secondary antibody incubation at r.t. for 60 min.



Paraformaldehyde-fixed, paraffin embedded Human Breast Cancer; Antigen retrieval by boiling in sodium citrate buffer (pH6.0) for 15 min; Antibody incubation with Clathrin heavy chain Monoclonal Antibody, Unconjugated(bsm-61487R) at 1:200 overnight at 4°C, followed by conjugation to the bs-0295G-HRP and DAB (C-0010) staining.



Paraformaldehyde-fixed, paraffin embedded Human Colon Cancer; Antigen retrieval by boiling in sodium citrate buffer (pH6.0) for 15 min; Antibody incubation with Clathrin heavy chain Monoclonal Antibody, Unconjugated(bsm-61487R) at 1:200 overnight at 4°C, followed by conjugation to the bs-0295G-HRP and DAB (C-0010) staining.