

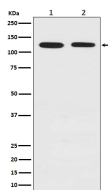
bsm-61485R**[Primary Antibody]****Drebrin Recombinant Rabbit mAb****BioSS**
ANTIBODIES

www.bioss.com.cn

sales@bioss.com.cn

techsupport@bioss.com.cn

400-901-9800

— DATASHEET —**Host:** Rabbit**Isotype:** IgG**Clonality:** Recombinant**GeneID:** 1627**SWISS:** Q16643**Target:** Drebrin**Immunogen:** A synthesized peptide derived from human Drebrin: 120-181/649.**Purification:** affinity purified by Protein A**Storage:** 10mM phosphate buffered saline(pH 7.4) with 150mM sodium chloride, 0.05% BSA, 0.02% Proclin300 and 50% glycerol.
Store at 4°C for short term. Store at -20°C for long term. Avoid repeated freeze/thaw cycles.**Background:** Actin cytoskeleton-organizing protein that plays a role in the formation of cell projections. Required for actin polymerization at immunological synapses (IS) and for the recruitment of the chemokine receptor CXCR4 to IS.**Applications:** **WB** (1:1000-2000)**ICC/IF** (1:50-200)**IP** (1:20-50)**Reactivity:** Human, Mouse, Rat**Predicted
MW.:** 71**Subcellular
Location:** Cytoplasm**— VALIDATION IMAGES —**

Western blot analysis of (1) HeLa cell lysate; (2) PC-12 cell lysate. Using Drebrin (bsm-61485R) monoclonal antibody at 1:1000 dilution and 4°C overnight incubation. Followed by conjugated secondary antibody incubation at r.t. for 60 min.