

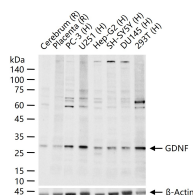
bsm-61484R**[Primary Antibody]****GDNF Recombinant Rabbit mAb****BioSS**
ANTIBODIES

www.bioss.com.cn

sales@bioss.com.cn

techsupport@bioss.com.cn

400-901-9800

— DATASHEET —**Host:** Rabbit**Isotype:** IgG**Clonality:** Recombinant**CloneNo.:** 8D7**GeneID:** 2668**SWISS:** P39905**Target:** GDNF**Applications:** WB (1:500-2000)**Flow-Cyt** (1:50-100)**Reactivity:** Human, Rat
(predicted: Mouse)**Immunogen:** A synthesized peptide derived from human GDNF: 50-100.**Purification:** affinity purified by Protein A**Storage:** 10mM phosphate buffered saline(pH 7.4) with 150mM sodium chloride, 0.05% BSA, 0.02% Proclin300 and 50% glycerol.
Store at 4°C for short term. Store at -20°C for long term. Avoid repeated freeze/thaw cycles.**Background:** Neurotrophic factor that enhances survival and morphological differentiation of dopaminergic neurons and increases their high-affinity dopamine uptake.**Predicted
MW.:** 24**Subcellular
Location:** Secreted**— VALIDATION IMAGES —**

25 ug total protein per lane of various lysates
(see on figure) probed with GDNF monoclonal
antibody, unconjugated (bsm-61484R) at 1:2000
dilution and 4°C overnight incubation. Followed
by conjugated secondary antibody incubation at
r.t. for 60 min.