

bsm-61479R**[Primary Antibody]**

www.bioss.com.cn

sales@bioss.com.cn

techsupport@bioss.com.cn

400-901-9800

Glucose 6 Phosphate Dehydrogenase Recombinant Rabbit mAb

DATASHEET

Host: Rabbit**Isotype:** IgG**Clonality:** Recombinant**CloneNo.:** 9E20**GeneID:** 2539**SWISS:** P11413**Target:** Glucose 6 Phosphate Dehydrogenase**Immunogen:** A synthesized peptide derived from human G6PD: 460-515/515.**Purification:** affinity purified by Protein A

Storage: 10mM phosphate buffered saline(pH 7.4) with 150mM sodium chloride, 0.05% BSA, 0.02% Proclin300 and 50% glycerol. Store at 4°C for short term. Store at -20°C for long term. Avoid repeated freeze/thaw cycles.

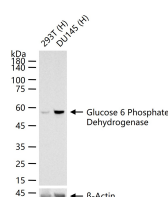
Background: Catalyzes the rate-limiting step of the oxidative pentose-phosphate pathway, which represents a route for the dissimilation of carbohydrates besides glycolysis. The main function of this enzyme is to provide reducing power (NADPH) and pentose phosphates for fatty acid and nucleic acid synthesis.

Applications: WB (1:500-2000)**IHC-P** (1:50-200)**IHC-F** (1:50-200)**IF** (1:50-200)**Flow-Cyt** (1:50-100)**ICC/IF** (1:50-200)**Reactivity:** Human

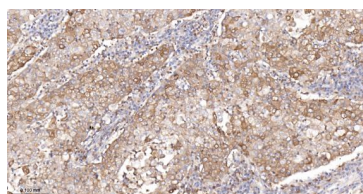
Predicted
MW.: 59

Subcellular Cell membrane ,Cytoplasm
Location: ,Nucleus

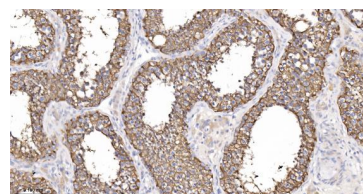
VALIDATION IMAGES



25 ug total protein per lane of various lysates (see on figure) probed with Glucose 6 Phosphate Dehydrogenase monoclonal antibody, unconjugated (bsm-61479R) at 1:2000 dilution and 4°C overnight incubation. Followed by conjugated secondary antibody incubation at r.t. for 60 min.



Paraformaldehyde-fixed, paraffin embedded Human Gastric Cancer; Antigen retrieval by boiling in sodium citrate buffer (pH6.0) for 15 min; Antibody incubation Glucose 6 Phosphate Dehydrogenase Monoclonal Antibody, Unconjugated(bsm-61479R) at 1:200 overnight at 4°C, followed by conjugation to the bs-0295G-HRP and DAB (C-0010) staining.



Paraformaldehyde-fixed, paraffin embedded Human Testicles; Antigen retrieval by boiling in sodium citrate buffer (pH6.0) for 15 min; Antibody incubation Glucose 6 Phosphate Dehydrogenase Monoclonal Antibody, Unconjugated(bsm-61479R) at 1:200 overnight at 4°C, followed by conjugation to the bs-0295G-HRP and DAB (C-0010) staining.