

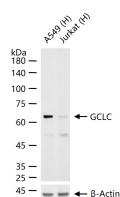
bsm-61478R**[Primary Antibody]****GCLC Recombinant Rabbit mAb****BioSS**
ANTIBODIES

www.bioss.com.cn

sales@bioss.com.cn

techsupport@bioss.com.cn

400-901-9800

— DATASHEET —**Host:** Rabbit**Isotype:** IgG**Clonality:** Recombinant**CloneNo.:** 3B4**GeneID:** 2729**SWISS:** P48506**Target:** GCLC**Immunogen:** A synthesized peptide derived from human GCLC: 600-637/637.**Purification:** affinity purified by Protein A**Storage:** 10mM phosphate buffered saline(pH 7.4) with 150mM sodium chloride, 0.05% BSA, 0.02% Proclin300 and 50% glycerol.
Store at 4°C for short term. Store at -20°C for long term. Avoid repeated freeze/thaw cycles.**Background:** Catalyzes the ATP-dependent ligation of L-glutamate and L-cysteine and participates in the first and rate-limiting step in glutathione biosynthesis.**Applications:** WB (1:500-2000)**Reactivity:** Human (predicted: Rat)**Predicted
MW.:** 73**Subcellular
Location:** Cytoplasm**— VALIDATION IMAGES —**

25 ug total protein per lane of various lysates
(see on figure) probed with GCLC monoclonal
antibody, unconjugated (bsm-61478R) at 1:1000
dilution and 4°C overnight incubation. Followed
by conjugated secondary antibody incubation at
r.t. for 60 min.