

bsm-61477R**[Primary Antibody]****CaMKII delta Recombinant Rabbit mAb****BioSS**
ANTIBODIES

www.bioss.com.cn

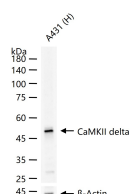
sales@bioss.com.cn

techsupport@bioss.com.cn

400-901-9800

— DATASHEET —

Host: Rabbit	Isotype: IgG	Applications: WB (1:500-2000) IHC-P (1:50-200) IHC-F (1:50-200) IF (1:50-200) Reactivity: Human (predicted: Mouse, Rat) Predicted MW.: 56 Subcellular Location: Cell membrane
Clonality: Recombinant		
GeneID: 817	SWISS: Q13557	
Target: CaMKII delta		
Immunogen: A synthesized peptide derived from human CaMKII delta: 3-54/499.		
Purification: affinity purified by Protein A		
Storage: 10mM phosphate buffered saline(pH 7.4) with 150mM sodium chloride, 0.05% BSA, 0.02% Proclin300 and 50% glycerol. Store at 4°C for short term. Store at -20°C for long term. Avoid repeated freeze/thaw cycles.		
Background: Calcium/calmodulin-dependent protein kinase involved in the regulation of Ca ²⁺ homeostasis and excitation-contraction coupling (ECC) in heart by targeting ion channels, transporters and accessory proteins involved in Ca ²⁺ influx into the myocyte, Ca ²⁺ release from the sarcoplasmic reticulum (SR), SR Ca ²⁺ uptake and Na ⁺ and K ⁺ channel transport. Targets also transcription factors and signaling molecules to regulate heart function. In its activated form, is involved in the pathogenesis of dilated cardiomyopathy and heart failure.		

— VALIDATION IMAGES —

25 ug total protein per lane of various lysates
(see on figure) probed with CaMKII delta
monoclonal antibody, unconjugated
(bsm-61477R) at 1:1000 dilution and 4°C
overnight incubation. Followed by conjugated
secondary antibody incubation at r.t. for 60 min.