

bsm-61476R**[Primary Antibody]**

BioSS
ANTIBODIES

www.bioss.com.cn

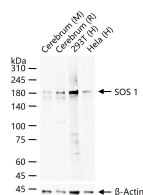
sales@bioss.com.cn

techsupport@bioss.com.cn

400-901-9800

SOS 1 Recombinant Rabbit mAb**— DATASHEET —**

Host: Rabbit	Isotype: IgG	Applications: WB (1:500-2000) IHC-P (1:100-200) IHC-F (1:100-200) IF (1:50-200) ICC/IF (1:50-200) Reactivity: Human, Mouse, Rat Predicted MW.: 152 Subcellular Location: Cell membrane ,Cytoplasm
Clonality: Recombinant		
GeneID: 6654	SWISS: Q07889	
Target: SOS1		
Immunogen: A synthesized peptide derived from human SOS 1: 1000-1200/1333.		
Purification: affinity purified by Protein A		
Storage: 10mM phosphate buffered saline(pH 7.4) with 150mM sodium chloride, 0.05% BSA, 0.02% Proclin300 and 50% glycerol. Store at 4°C for short term. Store at -20°C for long term. Avoid repeated freeze/thaw cycles.		
Background: Promotes the exchange of Ras-bound GDP by GTP. Probably by promoting Ras activation, regulates phosphorylation of MAP kinase MAPK3 in response to EGF.		

— VALIDATION IMAGES —

25 ug total protein per lane of various lysates (see on figure) probed with SOS 1 monoclonal antibody, unconjugated (bsm-61476R) at 1:1000 dilution and 4°C overnight incubation. Followed by conjugated secondary antibody incubation at r.t. for 60 min.