

bsm-61475R**[Primary Antibody]****BioSS**
ANTIBODIES

www.bioss.com.cn

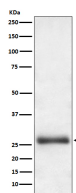
sales@bioss.com.cn

techsupport@bioss.com.cn

400-901-9800

ATG10 Recombinant Rabbit mAb**— DATASHEET —**

Host: Rabbit	Isotype: IgG	Applications: WB (1:1000-2000) IP (1:20-50)
Clonality: Recombinant		Reactivity: Human
GeneID: 83734	SWISS: Q9H0Y0	
Target: ATG10		
Immunogen: A synthesized peptide derived from human ATG10: 170-220.		
Purification: affinity purified by Protein A		Predicted MW.: 25
Storage: 10mM phosphate buffered saline(pH 7.4) with 150mM sodium chloride, 0.05% BSA, 0.02% Proclin300 and 50% glycerol. Store at 4°C for short term. Store at -20°C for long term. Avoid repeated freeze/thaw cycles.		Subcellular Location: Cytoplasm
Background: E2-like enzyme involved in autophagy. Acts as an E2-like enzyme that catalyzes the conjugation of ATG12 to ATG5. ATG12 conjugation to ATG5 is required for autophagy. Likely serves as an ATG5-recognition molecule. Not involved in ATG12 conjugation to ATG3.		

— VALIDATION IMAGES —

Western blot analysis of HeLa cell lysate. Using ATG10 (bsm-61475R) monoclonal antibody at 1:1000 dilution and 4°C overnight incubation. Followed by conjugated secondary antibody incubation at r.t. for 60 min.