

**bsm-61472R****[ Primary Antibody ]**

www.bioss.com.cn

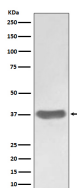
sales@bioss.com.cn

techsupport@bioss.com.cn

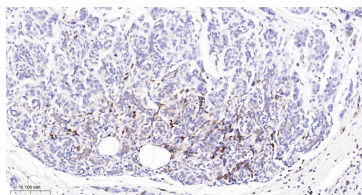
400-901-9800

**SFRP1 Recombinant Rabbit mAb****— DATASHEET —**

<b>Host:</b> Rabbit	<b>Isotype:</b> IgG	<b>Applications:</b> WB (1:500-2000) IHC-P (1:50-200) IHC-F (1:50-200) IF (1:50-200) ICC/IF (1:50-200)  <b>Reactivity:</b> Human   <b>Predicted MW.:</b> 35  <b>Subcellular Location:</b> Secreted
<b>Clonality:</b> Recombinant		
<b>GeneID:</b> 6422	<b>SWISS:</b> Q8N474	
<b>Target:</b> SFRP1		
<b>Immunogen:</b> A synthesized peptide derived from human FRP 1: 20-84.		
<b>Purification:</b> affinity purified by Protein A		
<b>Storage:</b> 10mM phosphate buffered saline(pH 7.4) with 150mM sodium chloride, 0.05% BSA, 0.02% Proclin300 and 50% glycerol. Store at 4°C for short term. Store at -20°C for long term. Avoid repeated freeze/thaw cycles.		
<b>Background:</b> Soluble frizzled-related proteins (sFRPS) function as modulators of Wnt signaling through direct interaction with Wnts. They have a role in regulating cell growth and differentiation in specific cell types. SFRP1 decreases intracellular beta-catenin levels.		

**— VALIDATION IMAGES —**

Western blot analysis of A375 cell lysate. Using SFRP1 (bsm-61472R) monoclonal antibody at 1:1000 dilution and 4°C overnight incubation. Followed by conjugated secondary antibody incubation at r.t. for 60 min.



Paraformaldehyde-fixed, paraffin embedded Human Breast Cancer; Antigen retrieval by boiling in sodium citrate buffer (pH6.0) for 15 min; The section was incubated with SFRP1 Monoclonal Antibody, Unconjugated (bsm-61472R) at 1:200 overnight at 4°C, followed by conjugation to the bs-0295G-HRP and DAB (C-0010) staining.