

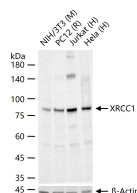
**bsm-61465R****[ Primary Antibody ]****BioSS**  
**ANTIBODIES**

www.bioss.com.cn

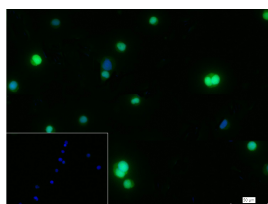
sales@bioss.com.cn

techsupport@bioss.com.cn

400-901-9800

**XRCC1 Recombinant Rabbit mAb****— DATASHEET —****Host:** Rabbit**Clonality:** Recombinant**GeneID:** 7515**Target:** XRCC1**Isotype:** IgG**CloneNo.:** 5C16**SWISS:** P18887**Applications:** WB (1:500-2000)**ICC/IF** (1:50-200)**Reactivity:** Human, Mouse, Rat**Immunogen:** A synthesized peptide derived from human XRCC1: 1-50/633.**Purification:** affinity purified by Protein A**Storage:** 10mM phosphate buffered saline(pH 7.4) with 150mM sodium chloride, 0.05% BSA, 0.02% Proclin300 and 50% glycerol. Store at 4°C for short term. Store at -20°C for long term. Avoid repeated freeze/thaw cycles.**Background:** Scaffold protein involved in DNA single-strand break repair by mediating the assembly of DNA break repair protein complexes. Negatively regulates ADP-ribosyltransferase activity of PARP1 during base-excision repair in order to prevent excessive PARP1 activity.**Predicted  
MW.:** 69**Subcellular  
Location:** Nucleus**— VALIDATION IMAGES —**

25 ug total protein per lane of various lysates (see on figure) probed with XRCC1 monoclonal antibody, unconjugated (bsm-61465R) at 1:1000 dilution and 4°C overnight incubation. Followed by conjugated secondary antibody incubation at r.t. for 60 min.



4% Paraformaldehyde-fixed K562 (H) cell; Triton X-100 at r.t. for 20 min; Antibody incubation with (XRCC1) monoclonal Antibody, unconjugated (bsm-61465R) 1:100, 90 min at 37°C; followed by conjugated Goat Anti-Rabbit IgG antibody (green, bs-40295G-FITC) at 37°C for 90 min, DAPI (blue, C02-04002) was used to stain the cell nuclei. PBS instead of the primary antibody was used as the blank control.