

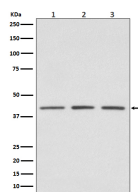
**bsm-61453R****[ Primary Antibody ]****BioSS**  
**ANTIBODIES**

www.bioss.com.cn

sales@bioss.com.cn

techsupport@bioss.com.cn

400-901-9800

**PRMT1 Recombinant Rabbit mAb****— DATASHEET —****Host:** Rabbit**Isotype:** IgG**Clonality:** Recombinant**GeneID:** 3276**SWISS:** Q99873**Target:** PRMT1**Immunogen:** A synthesized peptide derived from human PRMT1: 11-61.**Purification:** affinity purified by Protein A**Storage:** 10mM phosphate buffered saline(pH 7.4) with 150mM sodium chloride, 0.05% BSA, 0.02% Proclin300 and 50% glycerol. Store at 4°C for short term. Store at -20°C for long term. Avoid repeated freeze/thaw cycles.**Background:** Arginine methyltransferase that methylates (mono and asymmetric dimethylation) the guanidino nitrogens of arginyl residues present in proteins such as ESR1, histone H2, H3 and H4, FMR1, ILF3, HNRNPA1, HNRNPD, NFATC2IP, SUPT5H, TAF15, EWS, HABP4, SERBP1, RBM15, FOXO1, CHTOP, MAP3K5/ASK1 and NPRL2.**Applications:** **WB** (1:1000-2000)**IHC-P** (1:100-200)**IHC-F** (1:100-200)**IF** (1:50-200)**ICC/IF** (1:50-200)**IP** (1:20-50)**ChIP** (1:20-50)**Reactivity:** Human, Mouse, Rat**Predicted  
MW.:** 42**Subcellular  
Location:** Cytoplasm ,Nucleus**— VALIDATION IMAGES —**

Western blot analysis of (1) HeLa cell lysate; (2) NIH/3T3 cell lysate; (3) PC-12 cell lysate. Using PRMT1 (bsm-61453R) monoclonal antibody at 1:1000 dilution and 4°C overnight incubation. Followed by conjugated secondary antibody incubation at r.t. for 60 min.