

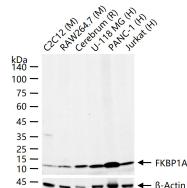
bsm-61448R**[Primary Antibody]****FKBP1A Recombinant Rabbit mAb****BioSS**
ANTIBODIES

www.bioss.com.cn

sales@bioss.com.cn

techsupport@bioss.com.cn

400-901-9800

DATASHEET**Host:** Rabbit**Isotype:** IgG**Clonality:** Recombinant**CloneNo.:** 7E6**GeneID:** 2280**SWISS:** P62942**Target:** FKBP1A**Applications:** WB (1:500-2000)**ICC/IF** (1:50-200)**Reactivity:** Human, Mouse, Rat**Immunogen:** A synthesized peptide derived from human FKBP1A: 85-108/108.**Purification:** affinity purified by Protein A**Storage:** 10mM phosphate buffered saline(pH 7.4) with 150mM sodium chloride, 0.05% BSA, 0.02% Proclin300 and 50% glycerol. Store at 4°C for short term. Store at -20°C for long term. Avoid repeated freeze/thaw cycles.**Predicted
MW.:** 12**Subcellular
Location:** Cytoplasm**Background:** May play a role in modulation of ryanodine receptor isoform-1 (RYR-1), a component of the calcium release channel of skeletal muscle sarcoplasmic reticulum. There are four molecules of FKBP12 per skeletal muscle RYR. PPIases accelerate the folding of proteins. It catalyzes the cis-trans isomerization of proline imidic peptide bonds in oligopeptides.**VALIDATION IMAGES**

25 ug total protein per lane of various lysates (see on figure) probed with FKBP1A monoclonal antibody, unconjugated (bsm-61448R) at 1:1000 dilution and 4°C overnight incubation. Followed by conjugated secondary antibody incubation at r.t. for 60 min.