

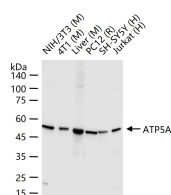
**bsm-61444R****[ Primary Antibody ]****Bioss**  
ANTIBODIES

www.bioss.com.cn

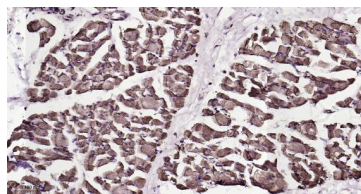
sales@bioss.com.cn

techsupport@bioss.com.cn

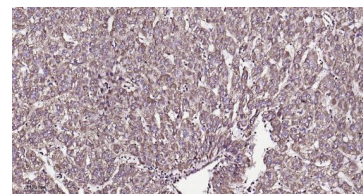
400-901-9800

**ATP5A Recombinant Rabbit mAb****— DATASHEET —****Host:** Rabbit**Isotype:** IgG**Clonality:** Recombinant**CloneNo.:** 4E10**GeneID:** 498**SWISS:** P25705**Target:** ATP5A**Immunogen:** A synthesized peptide derived from human ATP5A: 200-250.**Purification:** affinity purified by Protein A**Storage:** 10mM phosphate buffered saline(pH 7.4) with 150mM sodium chloride, 0.05% BSA, 0.02% Proclin300 and 50% glycerol. Store at 4°C for short term. Store at -20°C for long term. Avoid repeated freeze/thaw cycles.**Background:** Mitochondrial membrane ATP synthase (F(1)F(0) ATP synthase or Complex V) produces ATP from ADP in the presence of a proton gradient across the membrane which is generated by electron transport complexes of the respiratory chain. F-type ATPases consist of two structural domains, F(1) - containing the extramembraneous catalytic core, and F(0) - containing the membrane proton channel, linked together by a central stalk and a peripheral stalk.**Applications:** WB (1:500-2000)**IHC-P** (1:50-200)**IHC-F** (1:50-200)**IF** (1:50-200)**Flow-Cyt** (1:50-100)**ICC/IF** (1:50-200)**Reactivity:** Human, Mouse, Rat**Predicted  
MW.:** 60**Subcellular  
Location:** Cell membrane ,Cytoplasm**— VALIDATION IMAGES —**

25 ug total protein per lane of various lysates (see on figure) probed with ATP5A monoclonal antibody, unconjugated (bsm-61444R) at 1:2000 dilution and 4°C overnight incubation. Followed by conjugated secondary antibody incubation at r.t. for 60 min.



Paraformaldehyde-fixed, paraffin embedded Human Skeletal muscle; Antigen retrieval by boiling in sodium citrate buffer (pH6.0) for 15 min; Antibody incubation with ATP5A Monoclonal Antibody, Unconjugated(bsm-61444R) at 1:200 overnight at 4°C, followed by conjugation to the bs-0295G-HRP and DAB (C-0010) staining.



Paraformaldehyde-fixed, paraffin embedded Human Liver Cancer; Antigen retrieval by boiling in sodium citrate buffer (pH6.0) for 15 min; Antibody incubation with ATP5A Monoclonal Antibody, Unconjugated(bsm-61444R) at 1:200 overnight at 4°C, followed by conjugation to the bs-0295G-HRP and DAB (C-0010) staining.