

bsm-61441R**[Primary Antibody]**

Cathepsin B Recombinant Rabbit mAb

Bioss
ANTIBODIES

www.bioss.com.cn

sales@bioss.com.cn

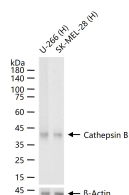
techsupport@bioss.com.cn

400-901-9800

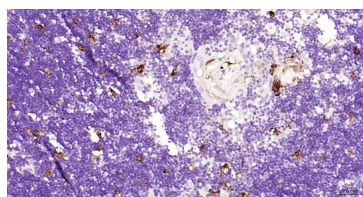
— DATASHEET —

Host: Rabbit**Isotype:** IgG**Clonality:** Recombinant**CloneNo.:** 14C12**GeneID:** 1508**SWISS:** P07858**Target:** Cathepsin B**Immunogen:** A synthesized peptide derived from human Cathepsin B: 2-180.**Purification:** affinity purified by Protein A**Storage:** 10mM phosphate buffered saline(pH 7.4) with 150mM sodium chloride, 0.05% BSA, 0.02% Proclin300 and 50% glycerol. Store at 4°C for short term. Store at -20°C for long term. Avoid repeated freeze/thaw cycles.**Background:** Thiol protease which is believed to participate in intracellular degradation and turnover of proteins. Cleaves matrix extracellular phosphoglycoprotein MEPE. Involved in the solubilization of cross-linked TG/thyroglobulin in the thyroid follicle lumen.**Applications:** WB (1:500-2000)**IHC-P** (1:50-200)**IHC-F** (1:50-200)**IF** (1:50-200)**ICC/IF** (1:50-200)**IP** (1:20-50)**Reactivity:** Human**Predicted
MW.:** 38**Subcellular
Location:** Cytoplasm

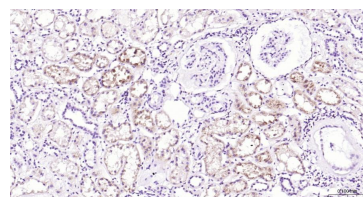
— VALIDATION IMAGES —



25 ug total protein per lane of various lysates (see on figure) probed with Cathepsin B monoclonal antibody, unconjugated (bsm-61441R) at 1:2000 dilution and 4°C overnight incubation. Followed by conjugated secondary antibody incubation at r.t. for 60 min.



Paraformaldehyde-fixed, paraffin embedded Human Thymus; Antigen retrieval by boiling in sodium citrate buffer (pH6.0) for 15 min; Antibody incubation with Cathepsin B Monoclonal Antibody, Unconjugated(bsm-61441R) at 1:200 overnight at 4°C, followed by conjugation to the bs-0295G-HRP and DAB (C-0010) staining.



Paraformaldehyde-fixed, paraffin embedded Human Kidney; Antigen retrieval by boiling in sodium citrate buffer (pH6.0) for 15 min; Antibody incubation with Cathepsin B Monoclonal Antibody, Unconjugated(bsm-61441R) at 1:200 overnight at 4°C, followed by conjugation to the bs-0295G-HRP and DAB (C-0010) staining.