

bsm-61434R**[Primary Antibody]****Bioss**
ANTIBODIES

www.bioss.com.cn

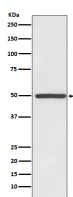
sales@bioss.com.cn

techsupport@bioss.com.cn

400-901-9800

Dopamine Transporter Recombinant Rabbit mAb**— DATASHEET —**

| | | |
|---|----------------------|--|
| Host: Rabbit | Isotype: IgG | Applications: WB (1:1000-2000) Flow-Cyt (1:50-100) IP (1:20-50) Reactivity: Human Predicted MW.: 68 Subcellular Location: Cell membrane ,Cytoplasm |
| Clonality: Recombinant | | |
| GeneID: 6531 | SWISS: Q01959 | |
| Target: Dopamine Transporter | | |
| Immunogen: A synthesized peptide derived from human Dopamine transporter: 150-215/620. | | |
| Purification: affinity purified by Protein A | | |
| Storage: 10mM phosphate buffered saline(pH 7.4) with 150mM sodium chloride, 0.05% BSA, 0.02% Proclin300 and 50% glycerol. Store at 4°C for short term. Store at -20°C for long term. Avoid repeated freeze/thaw cycles. | | |
| Background: Mediates sodium- and chloride-dependent transport of dopamine. Also mediates sodium- and chloride-dependent transport of norepinephrine (also known as noradrenaline). Regulator of light-dependent retinal hyaloid vessel regression, downstream of OPN5 signaling. | | |

— VALIDATION IMAGES —

Western blot analysis of HeLa cell lysate. Using Dopamine Transporter (bsm-61434R) monoclonal antibody at 1:1000 dilution and 4°C overnight incubation. Followed by conjugated secondary antibody incubation at r.t. for 60 min.