

**bsm-61433R****[ Primary Antibody ]****Cathepsin L/V/K/H Recombinant Rabbit mAb****BioSS**  
**ANTIBODIES**

www.bioss.com.cn

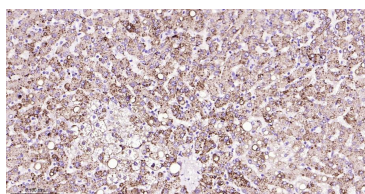
sales@bioss.com.cn

techsupport@bioss.com.cn

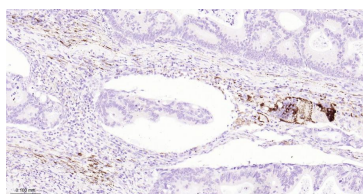
400-901-9800

**— DATASHEET —**

<b>Host:</b> Rabbit	<b>Isotype:</b> IgG	<b>Applications:</b> <b>IHC-P</b> (1:50-200) <b>IHC-F</b> (1:50-200) <b>IF</b> (1:50-200)  <b>Reactivity:</b> Human, Mouse    <b>Predicted MW.:</b> 37,38  <b>Subcellular Location:</b> Lysosome ,Cytoplasmic vesicle ,Membrane ,Secreted ,Cell membrane
<b>Clonality:</b> Recombinant	<b>CloneNo.:</b> 5A7	
<b>GeneID:</b> 1514	<b>SWISS:</b> P07711	
<b>Target:</b> Cathepsin L/V/K/H		
<b>Immunogen:</b> A synthesized peptide derived from human Cathepsin L/V/K/H: 110-135.		
<b>Purification:</b> affinity purified by Protein A		
<b>Storage:</b> 10mM phosphate buffered saline(pH 7.4) with 150mM sodium chloride, 0.05% BSA, 0.02% Proclin300 and 50% glycerol. Store at 4°C for short term. Store at -20°C for long term. Avoid repeated freeze/thaw cycles.		
<b>Background:</b> Thiol protease important for the overall degradation of proteins in lysosomes (Probable). Plays a critical for normal cellular functions such as general protein turnover, antigen processing and bone remodeling.		

**— VALIDATION IMAGES —**

Paraformaldehyde-fixed, paraffin embedded Human Liver; Antigen retrieval by boiling in sodium citrate buffer (pH6.0) for 15 min; The section was incubated with Cathepsin L/V/K/H Monoclonal Antibody, Unconjugated (bsm-61433R) at 1:200 overnight at 4°C, followed by conjugation to the bs-0295G-HRP and DAB (C-0010) staining.



Paraformaldehyde-fixed, paraffin embedded Human Colon Cancer; Antigen retrieval by boiling in sodium citrate buffer (pH6.0) for 15 min; The section was incubated with Cathepsin L/V/K/H Monoclonal Antibody, Unconjugated (bsm-61433R) at 1:200 overnight at 4°C, followed by conjugation to the bs-0295G-HRP and DAB (C-0010) staining.