

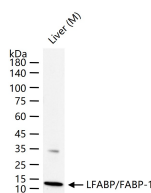
bsm-61432R**[Primary Antibody]****LFABP/FABP-1 Recombinant Rabbit mAb****BioSS**
ANTIBODIES

www.bioss.com.cn

sales@bioss.com.cn

techsupport@bioss.com.cn

400-901-9800

— DATASHEET —**Host:** Rabbit**Isotype:** IgG**Clonality:** Recombinant**CloneNo.:** 3D15**GeneID:** 2168**SWISS:** P07148**Target:** LFABP/FABP-1**Immunogen:** A synthesized peptide derived from human FABP1: 70-127.**Purification:** affinity purified by Protein A**Storage:** 10mM phosphate buffered saline(pH 7.4) with 150mM sodium chloride, 0.05% BSA, 0.02% Proclin300 and 50% glycerol. Store at 4°C for short term. Store at -20°C for long term. Avoid repeated freeze/thaw cycles.**Background:** Plays a role in lipoprotein-mediated cholesterol uptake in hepatocytes. Binds cholesterol. Binds free fatty acids and their coenzyme A derivatives, bilirubin, and some other small molecules in the cytoplasm. May be involved in intracellular lipid transport.**Applications:** **WB** (1:500-2000)**Flow-Cyt** (1:50-100)**Reactivity:** Mouse (predicted: Human)**Predicted
MW.:** 14**Subcellular
Location:** Cytoplasm**— VALIDATION IMAGES —**

25 ug total protein per lane of various lysates
(see on figure) probed with LFABP/FABP-1
monoclonal antibody, unconjugated
(bsm-61432R) at 1:2000 dilution and 4°C
overnight incubation. Followed by conjugated
secondary antibody incubation at r.t. for 60 min.