

bsm-61429R**[Primary Antibody]****BMP7 Recombinant Rabbit mAb****BioSS**
ANTIBODIES

www.bioss.com.cn

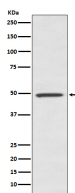
sales@bioss.com.cn

techsupport@bioss.com.cn

400-901-9800

— DATASHEET —

Host: Rabbit	Isotype: IgG	Applications: WB (1:1000-2000) IP (1:20-50)
Clonality: Recombinant		Reactivity: Human, Mouse, Rat
GeneID: 655	SWISS: P18075	
Target: BMP7		
Immunogen: A synthesized peptide derived from human BMP7: 300-350/431.		
Purification: affinity purified by Protein A		Predicted MW.: 49
Storage: 10mM phosphate buffered saline(pH 7.4) with 150mM sodium chloride, 0.05% BSA, 0.02% Proclin300 and 50% glycerol. Store at 4°C for short term. Store at -20°C for long term. Avoid repeated freeze/thaw cycles.		Subcellular Location: Secreted
Background: Growth factor of the TGF-beta superfamily that plays important role in various biological processes, including embryogenesis, hematopoiesis, neurogenesis and skeletal morphogenesis.		

— VALIDATION IMAGES —

Western blot analysis of human fetal kidney lysate. Using BMP7 (bsm-61429R) monoclonal antibody at 1:1000 dilution and 4°C overnight incubation. Followed by conjugated secondary antibody incubation at r.t. for 60 min.