

bsm-61425R**[Primary Antibody]****BioSS**
ANTIBODIES

www.bioss.com.cn

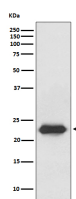
sales@bioss.com.cn

techsupport@bioss.com.cn

400-901-9800

NGAL Recombinant Rabbit mAb**— DATASHEET —**

Host: Rabbit	Isotype: IgG	Applications: WB (1:500-2000) IHC-P (1:50-200) IHC-F (1:50-200) IF (1:50-200) ICC/IF (1:50-200) Reactivity: Human Predicted MW.: 23 Subcellular Location: Secreted
Clonality: Recombinant		
GeneID: 3934	SWISS: P80188	
Target: NGAL		
Immunogen: A synthesized peptide derived from human NGAL: 50-100.		
Purification: affinity purified by Protein A		
Storage: 10mM phosphate buffered saline(pH 7.4) with 150mM sodium chloride, 0.05% BSA, 0.02% Proclin300 and 50% glycerol. Store at 4°C for short term. Store at -20°C for long term. Avoid repeated freeze/thaw cycles.		
Background: Iron-trafficking protein involved in multiple processes such as apoptosis, innate immunity and renal development.		

— VALIDATION IMAGES —

Western blot analysis of SW480 cell lysate. Using NGAL (bsm-61425R) monoclonal antibody at 1:1000 dilution and 4°C overnight incubation. Followed by conjugated secondary antibody incubation at r.t. for 60 min.

— SELECTED CITATIONS —

- **[IF=6]** Haiwen Su. et al. Magnetic structural color microspheres for the multiplex detection of acute kidney injury biomarkers. ANAL CHIM ACTA. 2025 Apr;1346:343767 IF ;Human. 40021321