

**bsm-61417R****[ Primary Antibody ]****Bioss**  
**ANTIBODIES**

www.bioss.com.cn

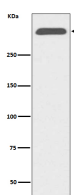
sales@bioss.com.cn

techsupport@bioss.com.cn

400-901-9800

**ApoB Recombinant Rabbit mAb****— DATASHEET —**

<b>Host:</b> Rabbit	<b>Isotype:</b> IgG	<b>Applications:</b> <b>WB</b> (1:500-2000) <b>Flow-Cyt</b> (1:50-100) <b>IP</b> (1:20-50)  <b>Reactivity:</b> Human    <b>Predicted MW.:</b> 516  <b>Subcellular Location:</b> Secreted ,Cytoplasm
<b>Clonality:</b> Recombinant		
<b>GeneID:</b> 338	<b>SWISS:</b> P04114	
<b>Target:</b> ApoB		
<b>Immunogen:</b> A synthesized peptide derived from human Apolipoprotein B 100: 100-164/4563.		
<b>Purification:</b> affinity purified by Protein A		
<b>Storage:</b> 10mM phosphate buffered saline(pH 7.4) with 150mM sodium chloride, 0.05% BSA, 0.02% Proclin300 and 50% glycerol. Store at 4°C for short term. Store at -20°C for long term. Avoid repeated freeze/thaw cycles.		
<b>Background:</b> Apolipoprotein B is a major protein constituent of chylomicrons (apo B-48), LDL (apo B-100) and VLDL (apo B-100). Apo B-100 functions as a recognition signal for the cellular binding and internalization of LDL particles by the apoB/E receptor.		

**— VALIDATION IMAGES —**

Western blot analysis of human serum lysate.  
Using ApoB (bsm-61417R) monoclonal antibody  
at 1:1000 dilution and 4°C overnight incubation.  
Followed by conjugated secondary antibody  
incubation at r.t. for 60 min.