

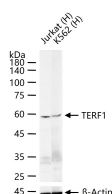
bsm-61416R**[Primary Antibody]**

www.bioss.com.cn

sales@bioss.com.cn

techsupport@bioss.com.cn

400-901-9800

TERF1 Recombinant Rabbit mAb**— DATASHEET —****Host:** Rabbit**Isotype:** IgG**Clonality:** Recombinant**CloneNo.:** 16G1**GeneID:** 7013**SWISS:** P54274**Target:** TRF1**Immunogen:** A synthesized peptide derived from human TRF1: 70-135/439.**Purification:** affinity purified by Protein A**Storage:** 10mM phosphate buffered saline(pH 7.4) with 150mM sodium chloride, 0.05% BSA, 0.02% Proclin300 and 50% glycerol. Store at 4°C for short term. Store at -20°C for long term. Avoid repeated freeze/thaw cycles.**Background:** Plays an influential role in cellular immortalization and cellular senescence. TRF1 negatively regulates telomere elongation, while TRF2 protects the chromosome ends by inhibiting end-to-end fusions. Down-regulation of TRF expression in tumor cells may contribute to cell immortalization and malignant progression.**Applications:** WB (1:500-2000)**ICC/IF** (1:50-200)**Reactivity:** Human (predicted: Mouse)**Predicted
MW.:** 50**Subcellular
Location:** Cytoplasm ,Nucleus**— VALIDATION IMAGES —**

25 ug total protein per lane of various lysates (see on figure) probed with TERF1 monoclonal antibody, unconjugated (bsm-61416R) at 1:1000 dilution and 4°C overnight incubation. Followed by conjugated secondary antibody incubation at r.t. for 60 min.