

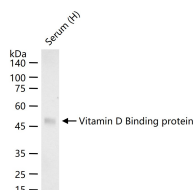
bsm-61415R**[Primary Antibody]****BioSS**
ANTIBODIES

www.bioss.com.cn

sales@bioss.com.cn

techsupport@bioss.com.cn

400-901-9800

Vitamin D binding protein Recombinant Rabbit mAb**DATASHEET****Host:** Rabbit**Isotype:** IgG**Clonality:** Recombinant**CloneNo.:** 12E5**GeneID:** 2638**SWISS:** P02774**Target:** Vitamin D Binding protein**Immunogen:** A synthesized peptide derived from human Vitamin D binding protein: 250-300/474.**Purification:** affinity purified by Protein A**Storage:** 10mM phosphate buffered saline(pH 7.4) with 150mM sodium chloride, 0.05% BSA, 0.02% Proclin300 and 50% glycerol. Store at 4°C for short term. Store at -20°C for long term. Avoid repeated freeze/thaw cycles.**Background:** Involved in vitamin D transport and storage, scavenging of extracellular G-actin, enhancement of the chemotactic activity of C5 alpha for neutrophils in inflammation and macrophage activation.**Applications:** WB (1:500-2000)**IHC-P** (1:100-200)**IHC-F** (1:100-200)**IF** (1:50-200)**Flow-Cyt** (1:50-100)**ICC/IF** (1:50-200)**Reactivity:** Human**Predicted
MW.:** 53**Subcellular
Location:** Secreted**VALIDATION IMAGES**

25 ug total protein per lane of various lysates (see on figure) probed with Vitamin D Binding protein monoclonal antibody, unconjugated (bsm-61415R) at 1:1000 dilution and 4°C overnight incubation. Followed by conjugated secondary antibody incubation at r.t. for 60 min.