

bsm-61412R**[Primary Antibody]****Bioss**
ANTIBODIES

www.bioss.com.cn

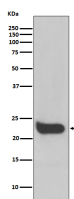
sales@bioss.com.cn

techsupport@bioss.com.cn

400-901-9800

IFNB1 Recombinant Rabbit mAb**— DATASHEET —**

Host: Rabbit	Isotype: IgG	Applications: WB (1:500-2000) IP (1:20-50) Reactivity: Human Predicted MW.: 22 Subcellular Location: Secreted
Clonality: Recombinant		
GeneID: 3456	SWISS: P01574	
Target: IFNB1		
Immunogen: A synthesized peptide derived from human IFN beta: 50-110/187.		
Purification: affinity purified by Protein A		
Storage: 10mM phosphate buffered saline(pH 7.4) with 150mM sodium chloride, 0.05% BSA, 0.02% Proclin300 and 50% glycerol. Store at 4°C for short term. Store at -20°C for long term. Avoid repeated freeze/thaw cycles.		
Background: Type I interferon cytokine that plays a key role in the innate immune response to infection, developing tumors and other inflammatory stimuli		

— VALIDATION IMAGES —

Western blot analysis of HeLa cell lysate. Using IFNB1 (bsm-61412R) monoclonal antibody at 1:1000 dilution and 4°C overnight incubation. Followed by conjugated secondary antibody incubation at r.t. for 60 min.