

**bsm-61410R****[ Primary Antibody ]****NUMB Recombinant Rabbit mAb****BioSS**  
**ANTIBODIES**

www.bioss.com.cn

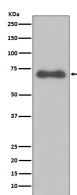
sales@bioss.com.cn

techsupport@bioss.com.cn

400-901-9800

**— DATASHEET —**

<b>Host:</b> Rabbit	<b>Isotype:</b> IgG	<b>Applications:</b> WB (1:1000-2000)
<b>Clonality:</b> Recombinant		<b>Reactivity:</b> Human, Mouse, Rat
<b>GeneID:</b> 8650	<b>SWISS:</b> P49757	
<b>Target:</b> NUMB		
<b>Immunogen:</b> A synthesized peptide derived from human NUMB: 1-47/651.		<b>Predicted MW.:</b> 71
<b>Purification:</b> affinity purified by Protein A		<b>Subcellular Location:</b> Cell membrane
<b>Storage:</b> 10mM phosphate buffered saline(pH 7.4) with 150mM sodium chloride, 0.05% BSA, 0.02% Proclin300 and 50% glycerol. Store at 4°C for short term. Store at -20°C for long term. Avoid repeated freeze/thaw cycles.		
<b>Background:</b> Numb acts as a negative regulator of Notch signaling by promoting ubiquitination and degradation of Notch. The protein is asymmetrically segregated into one daughter cell during cell division, producing two daughter cells with different responses to Notch signaling and different cell fates. The localization of Numb can also be regulated by G-protein coupled receptor (GPCR) and PKC signaling.		

**— VALIDATION IMAGES —**

Western blot analysis of Ramos cell lysate. Using NUMB (bsm-61410R) monoclonal antibody at 1:1000 dilution and 4°C overnight incubation. Followed by conjugated secondary antibody incubation at r.t. for 60 min.