

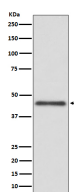
bsm-61409R**[Primary Antibody]****HLA G Recombinant Rabbit mAb****BioSS**
ANTIBODIES

www.bioss.com.cn

sales@bioss.com.cn

techsupport@bioss.com.cn

400-901-9800

— DATASHEET —**Host:** Rabbit**Isotype:** IgG**Clonality:** Recombinant**GeneID:** 3135**SWISS:** P17693**Target:** HLA G**Immunogen:** A synthesized peptide derived from human HLA G: 200-265/338.**Purification:** affinity purified by Protein A**Storage:** 10mM phosphate buffered saline(pH 7.4) with 150mM sodium chloride, 0.05% BSA, 0.02% Proclin300 and 50% glycerol. Store at 4°C for short term. Store at -20°C for long term. Avoid repeated freeze/thaw cycles.**Background:** Non-classical major histocompatibility class Ib molecule involved in immune regulatory processes at the maternal-fetal interface. In complex with B2M/beta-2 microglobulin binds a limited repertoire of nonamer self-peptides derived from intracellular proteins including histones and ribosomal proteins.**Applications:** WB (1:1000-2000)**Reactivity:** Human**Predicted
MW.:** 38**Subcellular
Location:** Cell membrane**— VALIDATION IMAGES —**

Western blot analysis of Jurkat cell lysate. Using HLA G (bsm-61409R) monoclonal antibody at 1:1000 dilution and 4°C overnight incubation. Followed by conjugated secondary antibody incubation at r.t. for 60 min.