

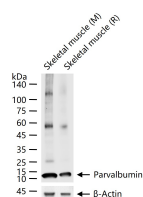
bsm-61405R**[Primary Antibody]****Parvalbumin Recombinant Rabbit mAb****Bioss**
ANTIBODIES

www.bioss.com.cn

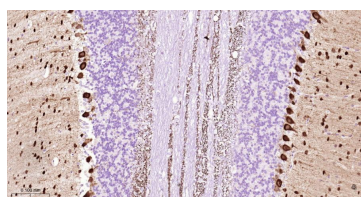
sales@bioss.com.cn

techsupport@bioss.com.cn

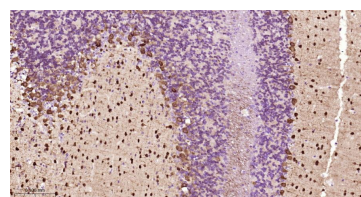
400-901-9800

— DATASHEET —**Host:** Rabbit**Clonality:** Recombinant**GeneID:** 5816**Target:** Parvalbumin**Immunogen:** A synthesized peptide derived from human Parvalbumin alpha: 1-110/110.**Purification:** affinity purified by Protein A**Storage:** 10mM phosphate buffered saline(pH 7.4) with 150mM sodium chloride, 0.05% BSA, 0.02% Proclin300 and 50% glycerol. Store at 4°C for short term. Store at -20°C for long term. Avoid repeated freeze/thaw cycles.**Background:** In muscle, parvalbumin is thought to be involved in relaxation after contraction. It binds two calcium ions.**Isotype:** IgG**CloneNo.:** 11H20**SWISS:** P20472**Applications:** **WB** (1:500-2000)**IHC-P** (1:100-500)**IHC-F** (1:100-500)**IF** (1:100-500)**IP** (1:20-50)**Reactivity:** Human, Mouse, Rat**Predicted
MW.:** 12**Subcellular
Location:** Extracellular matrix
,Nucleus**— VALIDATION IMAGES —**

25 ug total protein per lane of various lysates (see on figure) probed with Parvalbumin monoclonal antibody, unconjugated (bsm-61405R) at 1:1000 dilution and 4°C overnight incubation. Followed by conjugated secondary antibody incubation at r.t. for 60 min.



Paraformaldehyde-fixed, paraffin embedded Rat Cerebellum; Antigen retrieval by boiling in sodium citrate buffer (pH6.0) for 15 min; The section was incubated with Parvalbumin Monoclonal Antibody, Unconjugated (bsm-61405R) at 1:200 overnight at 4°C, followed by conjugation to the bs-0295G-HRP and DAB (C-0010) staining.



Paraformaldehyde-fixed, paraffin embedded Mouse Cerebellum; Antigen retrieval by boiling in sodium citrate buffer (pH6.0) for 15 min; The section was incubated with Parvalbumin Monoclonal Antibody, Unconjugated (bsm-61405R) at 1:200 overnight at 4°C, followed by conjugation to the bs-0295G-HRP and DAB (C-0010) staining.