

**bsm-61403R****[ Primary Antibody ]****BioSS**  
ANTIBODIES

www.bioss.com.cn

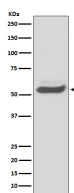
sales@bioss.com.cn

techsupport@bioss.com.cn

400-901-9800

**AAT Recombinant Rabbit mAb****— DATASHEET —**

<b>Host:</b> Rabbit	<b>Isotype:</b> IgG	<b>Applications:</b> WB (1:1000-2000) ICC/IF (1:50-200) IP (1:20-50)  <b>Reactivity:</b> Human   <b>Predicted MW.:</b> 47  <b>Subcellular Location:</b> Secreted ,Extracellular matrix
<b>Clonality:</b> Recombinant		
<b>GeneID:</b> 5265	<b>SWISS:</b> P01009	
<b>Target:</b> AAT		
<b>Immunogen:</b> A synthesized peptide derived from human Antithrombin 3: 1-418.		
<b>Purification:</b> affinity purified by Protein A		
<b>Storage:</b> 10mM phosphate buffered saline(pH 7.4) with 150mM sodium chloride, 0.05% BSA, 0.02% Proclin300 and 50% glycerol. Store at 4°C for short term. Store at -20°C for long term. Avoid repeated freeze/thaw cycles.		
<b>Background:</b> Inhibitor of serine proteases. Its primary target is elastase, but it also has a moderate affinity for plasmin and thrombin. Irreversibly inhibits trypsin, chymotrypsin and plasminogen activator. The aberrant form inhibits insulin-induced NO synthesis in platelets, decreases coagulation time and has proteolytic activity against insulin and plasmin.		

**— VALIDATION IMAGES —**

Western blot analysis of human fetal kidney lysate. Using AAT (bsm-61403R) monoclonal antibody at 1:1000 dilution and 4°C overnight incubation. Followed by conjugated secondary antibody incubation at r.t. for 60 min.